

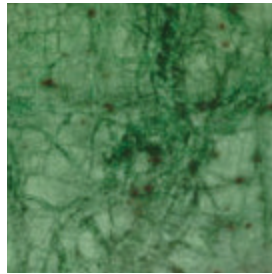
# TABLE TOP GUIDE



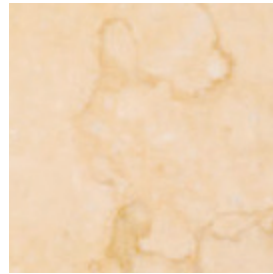
## Marbles



Carrara



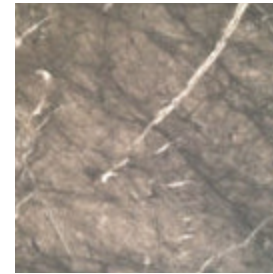
Verde Rajistan



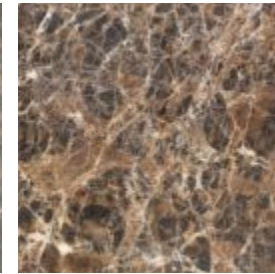
Botticino



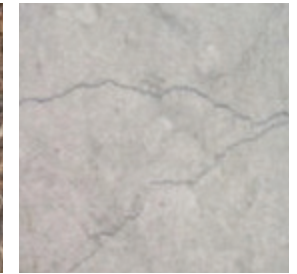
Arabescato



Grigio Carnico



Emperador

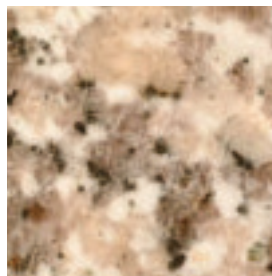


Thala Grey

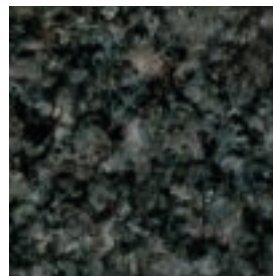
## Granite



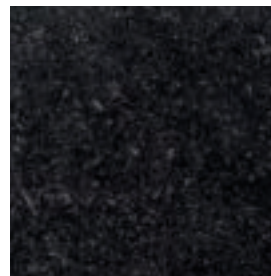
Baltic Brown



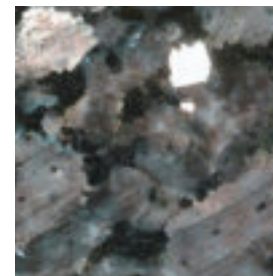
Talila Grey



Nero Bon Accord



Nero Assoluto (Polished)



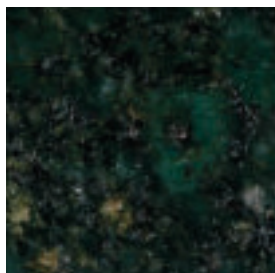
Blue Pearl



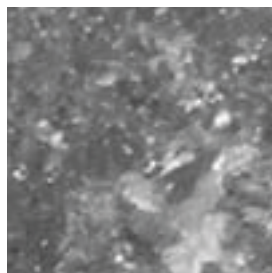
Kashmir White



Giallo Venezia



Ubatuba



Via Lactea



## Edge Profiles

There are 5 standard profiles for both traditional and contemporary looks



Straight Edge (all stones)



O. Gee (marble only)



Under Chamfer (all stones)



Bullnose (all stones)



Du Pont (marble only)

## Metal Edging

All rings are 30mm deep and are available in 4 different designs and the following metal finishes: polished brass, brushed brass, polished stainless steel, brushed stainless steel. The rings are braised so there is no join line. Up to 130cm diameter and 130cm x 80cm rectangle, with a depth of 30mm subject to quotation.

