

Protocol
41 Tallon Road
Hutton, Brentwood, Essex
CM13 1TG United Kingdom

[t] 0208 591 6770
[e] sales@protocoluk.com
[w] www.protocoluk.com



FABRICS 2015

JOYPASHAGRACETWEETBLITZGOSSIPTWEET
M
TATAMI JOI
SINW
WNS
IKI BABA
LART
QUEEN
GLISS
SO
GRACE
ICE
AWS
KUADRA
NJOY
KOI-BOOKI
SARA
SAR
SINW
SINW
KUADRA
OCN
EVO
LT
N
PL
US
K
A
O
N
R
A
C
E

PROTOCOL

CAT.

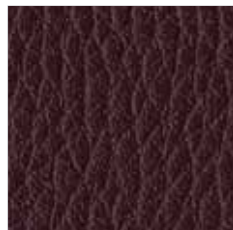
C	 FINTA PELLE IGNIFUGA	FIRE RETARDANT SIMIL LEATHER - SIMILICUIR NON-FEU - FEUERHEMMENDES KUNSTLEDER - POLIPIEL IGNÍFUGA
C	 LANA IGNIFUGA	FIRE RETARDANT WOOL - LAINE NON-FEU - FEUERHEMMENDE WOLLE - LANA IGNÍFUGA
C	 TESSUTO IGNIFUGO	FIRE RETARDANT FABRIC - TISSU NON-FEU - FEUERHEMMENDER STOFF - TELA IGNÍFUGA
D	 TESSUTO IGNIFUGO	FIRE RETARDANT FABRIC - TISSU NON-FEU - FEUERHEMMENDER STOFF - TELA IGNÍFUGA
G	 LANA IGNIFUGA	FIRE RETARDANT WOOL - LAINE NON-FEU - FEUERHEMMENDE WOLLE - LANA IGNÍFUGA
G	 TESSUTO IGNIFUGO	FIRE RETARDANT FABRIC - TISSU NON-FEU - FEUERHEMMENDER STOFF - TELA IGNÍFUGA
H	 FINTA PELLE IGNIFUGA	FIRE RETARDANT SIMIL LEATHER - SIMILICUIR NON-FEU - FEUERHEMMENDES KUNSTLEDER - POLIPIEL IGNÍFUGA
H	 VELLUTO IGNIFUGO	FIRE RETARDANT VELVET - VELOURS NON-FEU - FEUERHEMMENDER VELOURS - TERCIOPELO IGNÍFUGO
H	 TESSUTO IGNIFUGO	FIRE RETARDANT FABRIC - TISSU NON-FEU - FEUERHEMMENDER STOFF - TELA IGNÍFUGA
N	 TESSUTO IGNIFUGO	FIRE RETARDANT FABRIC - TISSU NON-FEU - FEUERHEMMENDER STOFF - TELA IGNÍFUGA

I colori dei campioni di tessuto sono indicativi.
Colours of fabric samples are approximate.

CATEGORIA C

FINTA PELLE IGNIFUGA - FIRE RETARDANT SIMIL LEATHER - SIMILICUIR NON-FEU - FEUERHEMMENDES KUNSTLEDER - POLIPIEL IGNÍFUGA

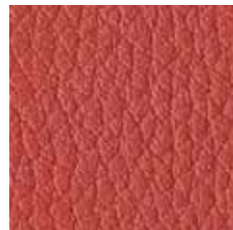
C 18



C 11



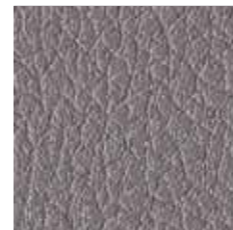
C 12



C 13



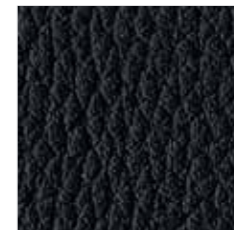
C 15



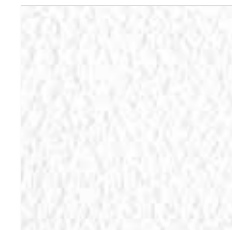
C 10



C 17



C 14



C 21



C 20



C 22



PROTOCOL



CATEGORIA C

FINTA PELLE IGNIFUGA
FIRE RETARDANT SIMIL LEATHER
SIMILICUIR NON-FEU
FEUERHEMMENDES KUNSTLEDER
POLIPIEL IGNÍFUGA

CATEGORIA C - CATEGORY C - CATEGORIE C - KATEGORIE C - CATEGORIA C

COMPOSIZIONE
COMPOSITION
COMPOSITION
STOFFZUSAMMENSETZUNG
COMPOSICIÓN

85% PVC - 15% CO

RESISTENZA ALL'ABRASIONE
ABRASION RESISTANCE
RESISTANCE A L'ABRASION
ABRIEBBESTÄNDIGKEIT
RESISTENCIA A LA ABRASION

3.000 cicli (Metodo NFG 35 105)
3.000 cycles (Method NFG 35 105)
3.000 cycles (Méthod NFG 35 105)
3.000 Zyklen (Verfahren NFG 35 105)
3.000 ciclos (Método NFG 35 105)

RESISTENZA ALLA LUCE ARTIFICIALE
COLOUR FASTNESS TO ARTIFICIAL LIGHT
TENUE A LA LUMIERE
LICHTBESTÄNDIGKEIT
RESISTENCIA A LA LUZ ARTIFICIAL

Soddisfatto Xenotest gradi 6 su gradi 8 max
Complied with Xenotest degrees 6 on degrees 8 max
Réponse favorable au Xenotest grés 6, grés 8 max
Xenotest bestanden 6 Grade auf 8 Grade max
Cumple con el Xenotest grados 6, grados 8 max



LAVAGGIO
CLEANING
ENTRETIEN
REINIGEN
LAVADO

Pulire con un panno umido. Per le macchie ostinate utilizzare un sapone neutro. Non usare detersivi, solventi, candeggianti, abrasivi.
Clean with warm and damp cloth. More difficult stains can be removed with neutral soap. Do not use detergents, solvents, bleached, abrasives.
Nettoyer avec de l'eau chaude et un chiffon humide. Pour les taches persistantes utiliser un savon neutre.
Ne pas employer de détergents, solvants, blanchisseurs, abrasifs.
Reinigen mit einem feuchten Tuch. Neutralseife benutzen, um Schmutzflecken zu reinigen.
Kein Wasch-, Lösungs-, Bleich- und Abreibungsmittel benutzen.
Limpiar con trapo humedo. Utilizar jabón neutro para limpiar manchas.
No utilizar detergentes, solventes, decolorantes y agentes abrasivos.

I	EN 1021 Part 1&2
GB	BS 5852 Crib N. 5
F	M1
D	DIN 4102 B2
E	M1



2015.01



CATEGORIA C

FINTA PELLE IGNIFUGA - FIRE RETARDANT SIMIL LEATHER - SIMILICUIR NON-FEU - FEUERHEMMENDES KUNSTLEDER - POLIPIEL IGNÍFUGA

PROTOCOL 

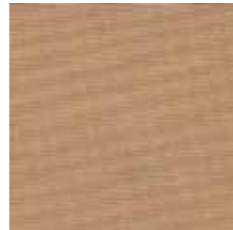
C 60



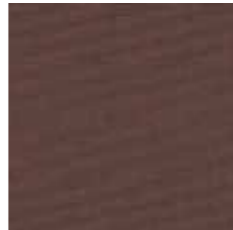
C 61



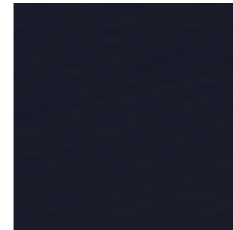
C 62



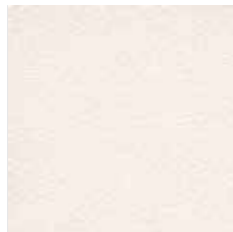
C 63



C 64



C 90



C 94



C 95



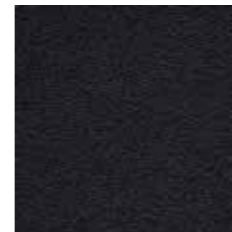
C 92



C 91



C 93



PROTOCOL



CATEGORIA C

FINTA PELLE IGNIFUGA
FIRE RETARDANT SIMIL LEATHER
SIMILICUIR NON-FEU
FEUERHEMMENDES KUNSTLEDER
POLIPIEL IGNÍFUGA

CATEGORIA C - CATEGORY C - CATEGORIE C - KATEGORIE C - CATEGORIA C

COMPOSIZIONE
COMPOSITION
COMPOSITION
STOFFZUSAMMENSETZUNG
COMPOSICIÓN

72% PVC - 25% CO - 3% PU

RESISTENZA ALL'ABRASIONE - Metodo Martindale
ABRASION RESISTANCE - Method Martindale
RESISTANCE A L'ABRASION - Méthod Martindale
ABRIEBBESTÄNDIGKEIT - Verfahren Martindale
RESISTENCIA A LA ABRASION - Método Martindale

≥ 50.000 cicli
≥ 50.000 cycles
≥ 50.000 cycles
≥ 50.000 Zyklen
≥ 50.000 ciclos

RESISTENZA ALLA LUCE ARTIFICIALE
COLOUR FASTNESS TO ARTIFICIAL LIGHT
TENUE A LA LUMIERE
LICHTBESTÄNDIGKEIT
RESISTENCIA A LA LUZ ARTIFICIAL

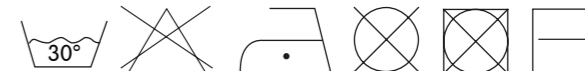
Soddisfatto Xenotest gradi 6 su gradi 8 max
Complied with Xenotest degrees 6 on degrees 8 max
Réponse favorable au Xenotest grés 6, grés 8 max
Xenotest bestanden 6 Grade auf 8 Grade max
Cumple con el Xenotest grados 6, grados 8 max



I
GB

UNI 9175/87 e 9175 FA-1/94 Classe 1
BS 5852 Crib N. 5
EN 1021-2/93

LAVAGGIO
CLEANING
ENTRETIEN
REINIGEN
LAVADO



2015.01

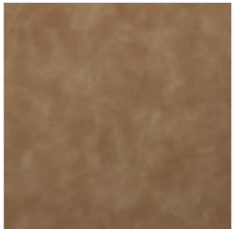


CATEGORIA C

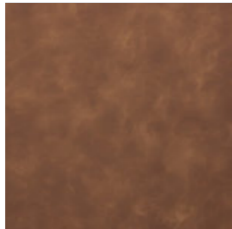
FINTA PELLE IGNIFUGA - FIRE RETARDANT SIMIL LEATHER - SIMILICUIR NON-FEU - FEUERHEMMENDES KUNSTLEDER - POLIPIEL IGNÍFUGA

PROTOCOL 

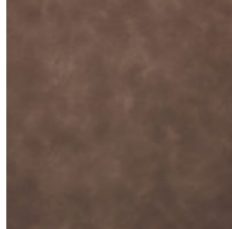
C45



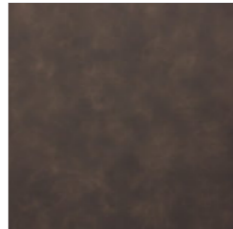
C46



C47



C48



PROTOCOL



CATEGORIA C

FINTA PELLE IGNIFUGA
FIRE RETARDANT SIMIL LEATHER
SIMILICUIR NON-FEU
FEUERHEMMENDES KUNSTLEDER
POLIPIEL IGNÍFUGA

CATEGORIA C - CATEGORY C - CATEGORIE C - KATEGORIE C - CATEGORIA C

COMPOSIZIONE
COMPOSITION
COMPOSITION
STOFFZUSAMMENSETZUNG
COMPOSICIÓN

RESISTENZA ALL'ABRASIONE - UNI EN ISO 5470-2
ABRASION RESISTANCE - UNI EN ISO 5470-2
RESISTANCE A L'ABRASION - UNI EN ISO 5470-2
ABRIEBBESTÄNDIGKEIT - UNI EN ISO 5470-2
RESISTENCIA A LA ABRASION - UNI EN ISO 5470-2

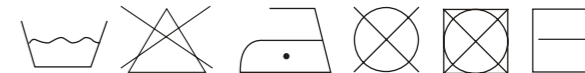


LAVAGGIO
CLEANING
ENTRETIEN
REINIGEN
LAVADO

80% PVC - 2% PU
18% PES

50.000 cicli
50.000 cycles
50.000 cycles
50.000 Zyklen
50.000 ciclos

UNI 9175: classe 1/M
EN 1021-2



2015.01



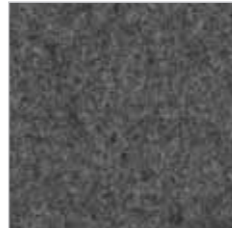
CATEGORIA C

LANA IGNIFUGA - FIRE RETARDANT WOOL - LAINE NON-FEU - FEUERHEMMENDE WOLLE - LANA IGNÍFUGA

C 01



C 02



C 07



C 04



C 05



C 06



C 03



PROTOCOL



CATEGORIA C

LANA IGNIFUGA
FIRE RETARDANT WOOL
LAINE NON-FEU
FEUERHEMMENDE WOLLE
LANA IGNÍFUGA

CATEGORIA C - CATEGORY C - CATEGORIE C - KATEGORIE C - CATEGORIA C

COMPOSIZIONE
COMPOSITION
COMPOSITION
STOFFZUSAMMENSETZUNG
COMPOSICIÓN

RESISTENZA ALL'ABRASIONE - Metodo Martindale
ABRASION RESISTANCE - Method Martindale
RESISTANCE A L'ABRASION - Méthod Martindale
ABRIEBBESTÄNDIGKEIT - Verfahren Martindale
RESISTENCIA A LA ABRASION - Método Martindale

RESISTENZA ALLA LUCE ARTIFICIALE
COLOUR FASTNESS TO ARTIFICIAL LIGHT
TENUE A LA LUMIERE
LICHTBESTÄNDIGKEIT
RESISTENCIA A LA LUZ ARTIFICIAL



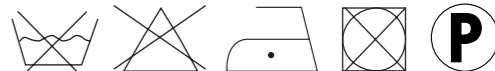
LAVAGGIO
CLEANING
ENTRETIEN
REINIGEN
LAVADO

80% Lana - 20% Poliammide
80% Wool - 20% Polyamide
80% Laine - 20% Polyamid
80% Wolle - 20% Polyamid
80% Lana virgen - 20% Poliamida

UNI EN ISO 12947:2000 - 100.000 cicli ± 20%
UNI EN ISO 12947:2000 - 100.000 cycles ± 20%
UNI EN ISO 12947:2000 - 100.000 cycles ± 20%
UNI EN ISO 12947:2000 - 100.000 Zyklen ± 20%
UNI EN ISO 12947:2000 - 100.000 ciclos ± 20%

Soddisfatto Xenotest UNI EN ISO 105 B02, 4±1
Complied with Xenotest UNI EN ISO 105 B02, 4±1
Réponse favorable au Xenotest UNI EN ISO 105 B02, 4±1
Xenotest bestanden UNI EN ISO 105 B02, 4±1
Cumple con el Xenotest UNI EN ISO 105 B02, 4±1

EN 1021 Part.1-2 using a CM Foam 35Kg/cu.m



2015.01



CATEGORIA C

TESSUTO IGNIFUGO - FIRE RETARDANT FABRIC - TISSU NON-FEU - FEUERHEMMENDER STOFF - TELA IGNÍFUGA

PROTOCOL 

C 74



C 78



C 79



C 76



C 75



C 77



PROTOCOL



CATEGORIA C

TESSUTO IGNIFUGO
FIRE RETARDANT FABRIC
TISSU NON-FEU
FEUERHEMMENDER STOFF
TELA IGNÍFUGA

CATEGORIA C - CATEGORY C - CATEGORIE C - KATEGORIE C - CATEGORIA C

COMPOSIZIONE
COMPOSITION
COMPOSITION
STOFFZUSAMMENSETZUNG
COMPOSICIÓN

100% Polyester

RESISTENZA ALL'ABRASIONE - Metodo Martindale
ABRASION RESISTANCE - Method Martindale
RESISTANCE A L'ABRASION - Méthod Martindale
ABRIEBBESTÄNDIGKEIT - Verfahren Martindale
RESISTENCIA A LA ABRASION - Método Martindale

80.000 cicli
80.000 cycles
80.000 cycles
80.000 Zyklen
80.000 ciclos

RESISTENZA ALLA LUCE ARTIFICIALE
COLOUR FASTNESS TO ARTIFICIAL LIGHT
TENUE A LA LUMIERE
LICHTBESTÄNDIGKEIT
RESISTENCIA A LA LUZ ARTIFICIAL

gradi 5, scala 1-8, max.8 - BS EN ISO 105 - B02



LAVAGGIO
CLEANING
ENTRETIEN
REINIGEN
LAVADO

EN 1021 1&2 - Calif. Tech. Bull. 117, sec. E. - Önorm B 3825/A 3800P1 - B2/Q1



2015.01



CATEGORIA C

TESSUTO IGNIFUGO - FIRE RETARDANT FABRIC - TISSU NON-FEU - FEUERHEMMENDER STOFF - TELA IGNÍFUGA

PROTOCOL 

C 50



C 54



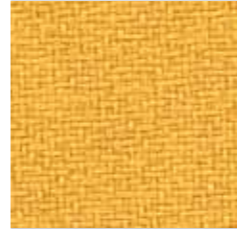
C 56



C 55



C 51



C 52



C 53



C 57



PROTOCOL



CATEGORIA C

TESSUTO IGNIFUGO
FIRE RETARDANT FABRIC
TISSU NON-FEU
FEUERHEMMENDER STOFF
TELA IGNÍFUGA

CATEGORIA C - CATEGORY C - CATEGORIE C - KATEGORIE C - CATEGORIA C

COMPOSIZIONE
COMPOSITION
COMPOSITION
STOFFZUSAMMENSETZUNG
COMPOSICIÓN

100% PL FR TREVIRA CS

RESISTENZA ALL'ABRASIONE - Metodo Martindale
ABRASION RESISTANCE - Method Martindale
RESISTANCE A L'ABRASION - Méthod Martindale
ABRIEBBESTÄNDIGKEIT - Verfahren Martindale
RESISTENCIA A LA ABRASION - Método Martindale

50.000 cicli ± 20%
50.000 cycles ± 20%
50.000 cycles ± 20%
50.000 Zyklen ± 20%
50.000 ciclos ± 20%

RESISTENZA ALLA LUCE ARTIFICIALE
COLOUR FASTNESS TO ARTIFICIAL LIGHT
TENUE A LA LUMIERE
LICHTBESTÄNDIGKEIT
RESISTENCIA A LA LUZ ARTIFICIAL

Soddisfatto Xenotest gradi 5±1 su gradi 8 max
Complied with Xenotest degrees 5±1 on degrees 8 max
Réponse favorable au Xenotest grés 5±1, grés 8 max
Xenotest bestanden 5±1 Grade auf 8 Grade max
Cumple con el Xenotest grados 5±1, grados 8 max



LAVAGGIO
CLEANING
ENTRETIEN
REINIGEN
LAVADO

I
GB
F
D
E
CLASSE 1
BS 5852 Crib N. 5
M1
B1 DIN 4102
M1



2015.01



CATEGORIA C-G

TESSUTO IGNIFUGO - FIRE RETARDANT FABRIC - TISSU NON-FEU - FEUERHEMMENDER STOFF - TELA IGNÍFUGA

PROTOCOL 

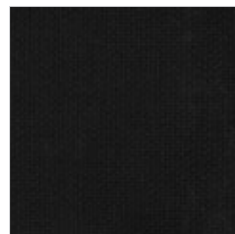
G 90



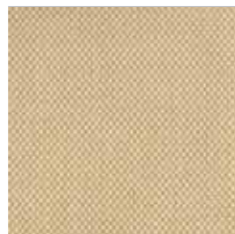
G 91



C 70



C 71



C 72



Blitz



Queen
cat. G90-G91



Pasha



PROTOCOL



CATEGORIA C-G

TESSUTO IGNIFUGO
FIRE RETARDANT FABRIC
TISSU NON-FEU
FEUERHEMMENDER STOFF
TELA IGNÍFUGA

CATEGORIA C-G - CATEGORY C-G - CATEGORIE C-G - KATEGORIE C-G - CATEGORIA C-G

COMPOSIZIONE
COMPOSITION
COMPOSITION
STOFFZUSAMMENSETZUNG
COMPOSICIÓN

G90-G91: 100% PES TREVIRA CS
C70-C71-C72: 100% PES TREVIRA CS

RESISTENZA ALL'ABRASIONE - Metodo Martindale
ABRASION RESISTANCE - Method Martindale
RESISTANCE A L'ABRASION - Méthod Martindale
ABRIEBBESTÄNDIGKEIT - Verfahren Martindale
RESISTENCIA A LA ABRASION - Método Martindale

G90-G91: 20.000 cicli / cycles / Zyklen / ciclos
C70-C71-C72: 30.000 cicli / cycles / Zyklen / ciclos

RESISTENZA ALLA LUCE ARTIFICIALE
COLOUR FASTNESS TO ARTIFICIAL LIGHT
TENUE A LA LUMIERE
LICHTBESTÄNDIGKEIT
RESISTENCIA A LA LUZ ARTIFICIAL

Soddisfatto Xenotest gradi 5 (G90-G91), gradi 5/6 (C70-C71-C72) su gradi 8 max
Complied with Xenotest degrees 5 (G90-G91) on degrees 8 max
Réponse favorable au Xenotest grés 5 (G90-G91), grés 8 max
Xenotest bestanden 5 Grade (G90-G91) auf 8 Grade max
Cumple con el Xenotest grados 5 (G90-G91), grados 8 max



LAVAGGIO
CLEANING
ENTRETIEN
REINIGEN
LAVADO

I
F
D
CLASSE 1
M1
B1 DIN 4102-1



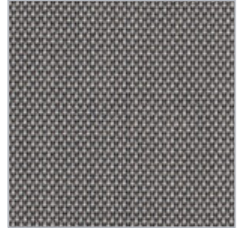
2015.01



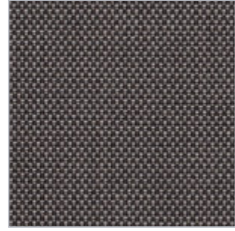
CATEGORIA D

TESSUTO IGNIFUGO - FIRE RETARDANT FABRIC - TISSU NON-FEU - FEUERHEMMENDER STOFF - TELA IGNÍFUGA

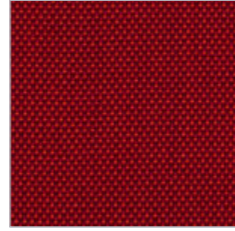
D 40



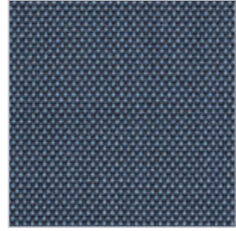
D 41



D 42



D 43



D 44



PROTOCOL



CATEGORIA D

TESSUTO IGNIFUGO
FIRE RETARDANT FABRIC
TISSU NON-FEU
FEUERHEMMENDER STOFF
TELA IGNÍFUGA

CATEGORIA D - CATEGORY D - CATEGORIE D - KATEGORIE D - CATEGORIA D

COMPOSIZIONE
COMPOSITION
COMPOSITION
STOFFZUSAMMENSETZUNG
COMPOSICIÓN

RESISTENZA ALL'ABRASIONE - Metodo Martindale
ABRASION RESISTANCE - Method Martindale
RESISTANCE A L'ABRASION - Méthod Martindale
ABRIEBBESTÄNDIGKEIT - Verfahren Martindale
RESISTENCIA A LA ABRASION - Método Martindale

RESISTENZA ALLA LUCE ARTIFICIALE
COLOUR FASTNESS TO ARTIFICIAL LIGHT
TENUE A LA LUMIERE
LICHTBESTÄNDIGKEIT
RESISTENCIA A LA LUZ ARTIFICIAL



LAVAGGIO
CLEANING
ENTRETIEN
REINIGEN
LAVADO

88% WOOL - 12% POLYAMIDE

100.000 cicli
100.000 cycles
100.000 cycles
100.000 Zyklen
100.000 ciclos

5-7 (ISO 1-8)
5-7 (ISO 1-8)
5-7 (ISO 1-8)
5-7 (ISO 1-8)
5-7 (ISO 1-8)

EN 1021 1&2
BS 5852 0&1
CAL 117-E Class 1
CA TB 117-2013



2015.05



CATEGORIA G

LANA IGNIFUGA - FIRE RETARDANT WOOL - LAINE NON-FEU - FEUERHEMMENDE WOLLE - LANA IGNÍFUGA

PROTOCOL 

G 21



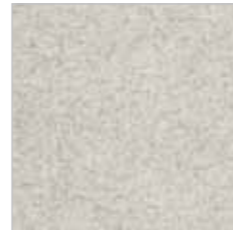
G 22



G 23



G 24



G 25



PROTOCOL



CATEGORIA G

LANA IGNIFUGA
FIRE RETARDANT WOOL
LAINE NON-FEU
FEUERHEMMENDE WOLLE
LANA IGNÍFUGA

COMPOSIZIONE
COMPOSITION
COMPOSITION
STOFFZUSAMMENSETZUNG
COMPOSICIÓN

RESISTENZA ALL'ABRASIONE - Metodo Martindale
ABRASION RESISTANCE - Method Martindale
RESISTANCE A L'ABRASION - Méthod Martindale
ABRIEBBESTÄNDIGKEIT - Verfahren Martindale
RESISTENCIA A LA ABRASION - Método Martindale

RESISTENZA ALLA LUCE ARTIFICIALE
COLOUR FASTNESS TO ARTIFICIAL LIGHT
TENUE A LA LUMIERE
LICHTBESTÄNDIGKEIT
RESISTENCIA A LA LUZ ARTIFICIAL



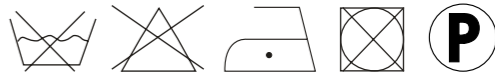
LAVAGGIO
CLEANING
ENTRETIEN
REINIGEN
LAVADO

100% Lana
100% Wool
100% Laine
100% Wolle
100% Lana virgen

45.000 cicli
45.000 cycles
45.000 cycles
45.000 Zyklen
45.000 ciclos

5-7 (ISO 1-8)
5-7 (ISO 1-8)
5-7 (ISO 1-8)
5-7 (ISO 1-8)
5-7 (ISO 1-8)

BS 5852, ig. s. 2-5
Cal. Tech. Bull. 117
DIN 4102 B2
EN 1021-1/2
IMO A.652(16)
UNI 9175/UNI 9176, 1IM
ÖNORM B1 / Q1



2015.01



CATEGORIA G

TESSUTO IGNIFUGO - FIRE RETARDANT FABRIC - TISSU NON-FEU - FEUERHEMMENDER STOFF - TELA IGNÍFUGA

PROTOCOL 

G 07



G 06



G 09



G 01



G 10



G 04



G 08



PROTOCOL



CATEGORIA G

TESSUTO IGNIFUGO
FIRE RETARDANT FABRIC
TISSU NON-FEU
FEUERHEMMENDER STOFF
TELA IGNÍFUGA

CATEGORIA G - CATEGORY G - CATEGORIE G - KATEGORIE G - CATEGORIA G

COMPOSIZIONE
COMPOSITION
COMPOSITION
STOFFZUSAMMENSETZUNG
COMPOSICIÓN

RESISTENZA ALL'ABRASIONE - Metodo Martindale
ABRASION RESISTANCE - Method Martindale
RESISTANCE A L'ABRASION - Méthod Martindale
ABRIEBBESTÄNDIGKEIT - Verfahren Martindale
RESISTENCIA A LA ABRASION - Método Martindale

RESISTENZA ALLA LUCE ARTIFICIALE
COLOUR FASTNESS TO ARTIFICIAL LIGHT
TENUE A LA LUMIERE
LICHTBESTÄNDIGKEIT
RESISTENCIA A LA LUZ ARTIFICIAL



LAVAGGIO
CLEANING
ENTRETIEN
REINIGEN
LAVADO

88% PL - 12% PU

150.000 cicli
150.000 cycles
150.000 cycles
150.000 Zyklen
150.000 ciclos

Soddisfatto Xenotest gradi 5 su gradi 8 max
Complied with Xenotest degrees 5 on degrees 8 max
Réponse favorable au Xenotest grés 5, grés 8 max
Xenotest bestanden 5 Grade auf 8 Grade max
Cumple con el Xenotest grados 5, grados 8 max

BS EN 1021 1&2
BS 5852 P1, 0 Cigaret
ÖNORM B 3825-B1-3800-Q1 UK
NF P 92-503 M3
UNI 9175 Class 1 I EMNE
California Bulletin CAL 117-E-Class 1
CA TB 117-2013



CATEGORIA G

TESSUTO IGNIFUGO - FIRE RETARDANT FABRIC - TISSU NON-FEU - FEUERHEMMENDER STOFF - TELA IGNÍFUGA

PROTOCOL 

G 59



G 66



G 63



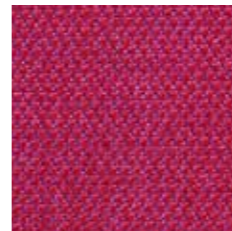
G 67



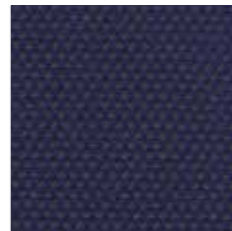
G 69



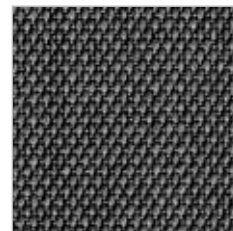
G 60



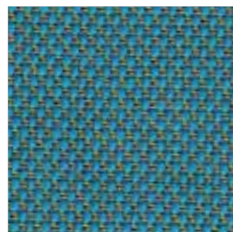
G 61



G 62



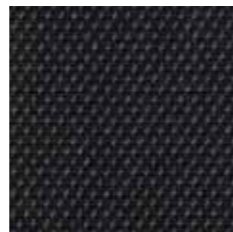
G 68



G 64



G 65



PROTOCOL



CATEGORIA G

TESSUTO IGNIFUGO
FIRE RETARDANT FABRIC
TISSU NON-FEU
FEUERHEMMENDER STOFF
TELA IGNÍFUGA

CATEGORIA G - CATEGORY G - CATEGORIE G - KATEGORIE G - CATEGORIA G

COMPOSIZIONE
COMPOSITION
COMPOSITION
STOFFZUSAMMENSETZUNG
COMPOSICIÓN

RESISTENZA ALL'ABRASIONE - Metodo Martindale
ABRASION RESISTANCE - Method Martindale
RESISTANCE A L'ABRASION - Méthod Martindale
ABRIEBBESTÄNDIGKEIT - Verfahren Martindale
RESISTENCIA A LA ABRASION - Método Martindale

RESISTENZA ALLA LUCE ARTIFICIALE
COLOUR FASTNESS TO ARTIFICIAL LIGHT
TENUE A LA LUMIERE
LICHTBESTÄNDIGKEIT
RESISTENCIA A LA LUZ ARTIFICIAL



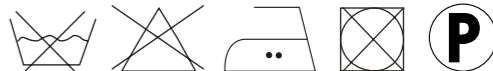
LAVAGGIO
CLEANING
ENTRETIEN
REINIGEN
LAVADO

90% Lana vergine, pettinata - 10% Nylon
90% Worsted pure new wool - 10% Nylon
90% Pure laine vierge cardée - 10% Nylon
90% Gekämmte Feinwolle - 10% Nylon
90% Pura lana peinada - 10% Nylon

80.000 cicli
80.000 cycles
80.000 cycles
80.000 Zyklen
80.000 ciclos

5-7 (ISO 1-8)
5-7 (ISO 1-8)
5-7 (ISO 1-8)
5-7 (ISO 1-8)
5-7 (ISO 1-8)

AS/NZS 3837, class 2
BS 5852, ig. s. 2-3
DIN 4102 B2, ÖNORM B1/Q1
EN 1021-1/2
NF D 60 013
NFPA 260
UNI 9175, classe 1
US Cal. Tech. Bull. 117



2015.01



CATEGORIA G

TESSUTO IGNIFUGO - FIRE RETARDANT FABRIC - TISSU NON-FEU - FEUERHEMMENDER STOFF - TELA IGNÍFUGA

PROTOCOL 

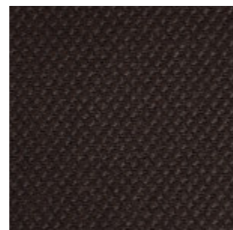
G 71



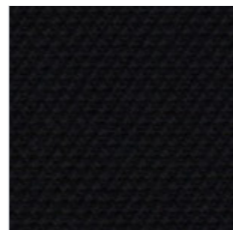
G 72



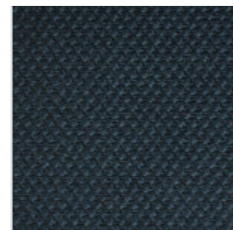
G 74



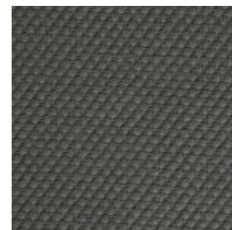
G 70



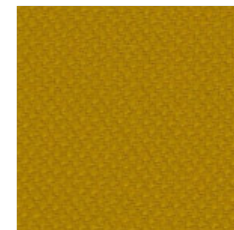
G 75



G 73



G 78



PROTOCOL



CATEGORIA G

TESSUTO IGNIFUGO
FIRE RETARDANT FABRIC
TISSU NON-FEU
FEUERHEMMENDER STOFF
TELA IGNÍFUGA

CATEGORIA G - CATEGORY G - CATEGORIE G - KATEGORIE G - CATEGORIA G

COMPOSIZIONE
COMPOSITION
COMPOSITION
STOFFZUSAMMENSETZUNG
COMPOSICIÓN

RESISTENZA ALL'ABRASIONE - Metodo Martindale
ABRASION RESISTANCE - Method Martindale
RESISTANCE A L'ABRASION - Méthod Martindale
ABRIEBBESTÄNDIGKEIT - Verfahren Martindale
RESISTENCIA A LA ABRASION - Método Martindale

RESISTENZA ALLA LUCE ARTIFICIALE
COLOUR FASTNESS TO ARTIFICIAL LIGHT
TENUE A LA LUMIERE
LICHTBESTÄNDIGKEIT
RESISTENCIA A LA LUZ ARTIFICIAL



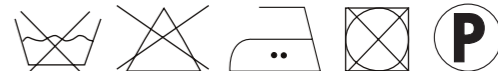
LAVAGGIO
CLEANING
ENTRETIEN
REINIGEN
LAVADO

90% Lana vergine, pettinata - 10% Nylon
90% Worsted pure new wool - 10% Nylon
90% Pure laine vierge cardée - 10% Nylon
90% Gekämmte Feinwolle - 10% Nylon
90% Pura lana peinada - 10% Nylon

80.000 cicli
80.000 cycles
80.000 cycles
80.000 Zyklen
80.000 ciclos

5-7 (ISO 1-8)
5-7 (ISO 1-8)
5-7 (ISO 1-8)
5-7 (ISO 1-8)
5-7 (ISO 1-8)

AS/NZS 3837, class 2
BS 5852, ig. s. 2-3
DIN 4102 B2, ÖNORM B1/Q1
EN 1021-1/2
NF D 60 013
NFPA 260
UNI 9175, classe 1
US Cal. Tech. Bull. 117



2015.05



CATEGORIA G

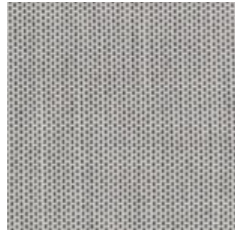
TESSUTO IGNIFUGO - FIRE RETARDANT FABRIC - TISSU NON-FEU - FEUERHEMMENDER STOFF - TELA IGNÍFUGA

PROTOCOL 

G 100



G 101



G 102



PROTOCOL



CATEGORIA G

TESSUTO IGNIFUGO
FIRE RETARDANT FABRIC
TISSU NON-FEU
FEUERHEMMENDER STOFF
TELA IGNÍFUGA

CATEGORIA G - CATEGORY G - CATEGORIE G - KATEGORIE G - CATEGORIA G

COMPOSIZIONE
COMPOSITION
COMPOSITION
STOFFZUSAMMENSETZUNG
COMPOSICIÓN

RESISTENZA ALL'ABRASIONE - Metodo Martindale
ABRASION RESISTANCE - Method Martindale
RESISTANCE A L'ABRASION - Méthod Martindale
ABRIEBBESTÄNDIGKEIT - Verfahren Martindale
RESISTENCIA A LA ABRASION - Método Martindale

RESISTENZA ALLA LUCE ARTIFICIALE
COLOUR FASTNESS TO ARTIFICIAL LIGHT
TENUE A LA LUMIERE
LICHTBESTÄNDIGKEIT
RESISTENCIA A LA LUZ ARTIFICIAL



LAVAGGIO
CLEANING
ENTRETIEN
REINIGEN
LAVADO

90% Lana vergine, pettinata - 10% Nylon
90% Worsted pure new wool - 10% Nylon
90% Pure laine vierge cardée - 10% Nylon
90% Gekämmte Feinwolle - 10% Nylon
90% Pura lana peinada - 10% Nylon

50.000 cicli
50.000 cycles
50.000 cycles
50.000 Zyklen
50.000 ciclos

6-7 (ISO 1-8)
6-7 (ISO 1-8)
6-7 (ISO 1-8)
6-7 (ISO 1-8)
6-7 (ISO 1-8)

California Tech. Bull. 117
DIN 4102 B2
EN 1021-1/2
IMO A.652(16)
NF D 60 013
UNI 9175 11M
ÖNORM B1/Q1



2015.05

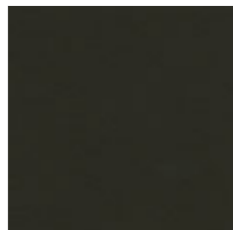


CATEGORIA H

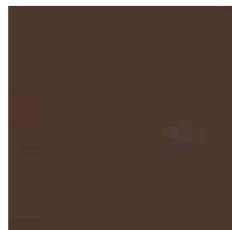
FINȚA PELLE IGNIFUGA - FIRE RETARDANT SIMIL LEATHER - SIMILICUIR NON-FEU - FEUERHEMMENDES KUNSTLEDER - POLIPIEL IGNÍFUGA

PROTOCOL 

H 30



H 29



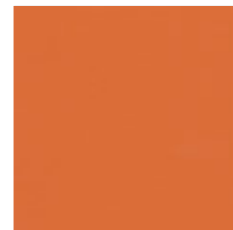
H 28



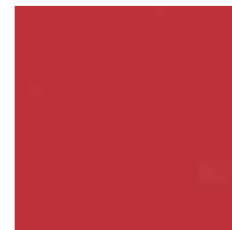
H 27



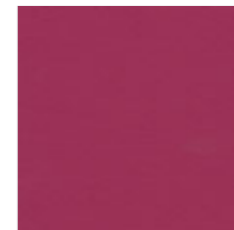
H 24



H 22



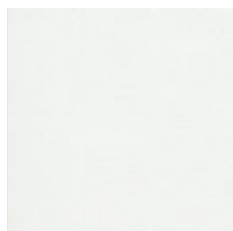
H 23



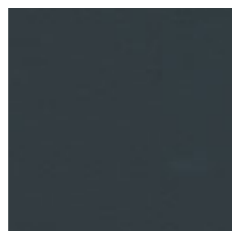
H 21



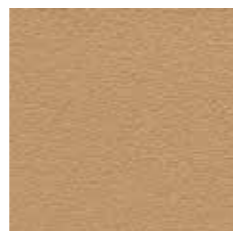
H 20



H 26



H 31



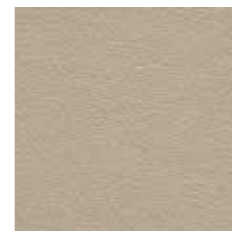
H 32



H 33



H 34



H 35



PROTOCOL



CATEGORIA H

FINTA PELLE IGNIFUGA
FIRE RETARDANT SIMIL LEATHER
SIMILICUIR NON-FEU
FEUERHEMMENDES KUNSTLEDER
POLIPIEL IGNÍFUGA

CATEGORIA H - CATEGORY H - CATEGORIE H - KATEGORIE H - CATEGORIA H

COMPOSIZIONE
COMPOSITION
COMPOSITION
STOFFZUSAMMENSETZUNG
COMPOSICIÓN

63% PU - 37% CO

RESISTENZA ALL'ABRASIONE - Metodo Martindale
ABRASION RESISTANCE - Method Martindale
RESISTANCE A L'ABRASION - Méthod Martindale
ABRIEBBESTÄNDIGKEIT - Verfahren Martindale
RESISTENCIA A LA ABRASION - Método Martindale

150.000 cicli
150.000 cycles
150.000 cycles
150.000 Zyklen
150.000 ciclos

RESISTENZA ALLA LUCE ARTIFICIALE
COLOUR FASTNESS TO ARTIFICIAL LIGHT
TENUE A LA LUMIERE
LICHTBESTÄNDIGKEIT
RESISTENCIA A LA LUZ ARTIFICIAL

Soddisfatto Xenotest gradi 5/6 su gradi 8 max
Complied with Xenotest degrees 5/6 on degrees 8 max
Réponse favorable au Xenotest grés 5/6, grés 8 max
Xenotest bestanden 5/6 Grade auf 8 Grade max
Cumple con el Xenotest grados 5/6, grados 8 max



LAVAGGIO
CLEANING
ENTRETIEN
REINIGEN
LAVADO

I UNI 9175/87 e 9175 FA-1/94 Classe 1
GB BS EN 1021 2/93
GB BS 5852 1/79 e 5852/90 Part. 4&5
IMO Res. A. 652(16)/89

Pulire con un panno umido d'acqua.
Non usare detersivi, solventi, candeggianti, abrasivi.
Clean with an umid cloth in water. Do not use detergents, solvents, bleached, abrasives.
Nettoyer avec un chiffon humide d'eau. Ne pas employer de détergents, solvants, blanchisseurs, abrasifs.
Reinigen mit durchfeuchtes Tuch und Neutralseife.
Neutralseife benutzen, um Schmutzflecken zu reinigen. Kein Wasch-, Lösungs-, Bleich- und Abreibungsmittel benutzen.
Limpiar con un trapo húmedo de agua. Utilizar jabón neutro para limpiar manchas.
No utilizar detergentes, solventes, decolorantes y agentes abrasivos.



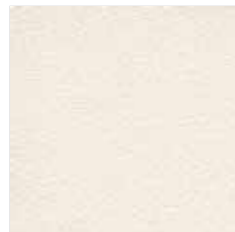
2015.01



CATEGORIA H

FINTA PELLE IGNIFUGA - FIRE RETARDANT SIMIL LEATHER - SIMILICUIR NON-FEU - FEUERHEMMENDES KUNSTLEDER - POLIPIEL IGNÍFUGA

H 80



H 81



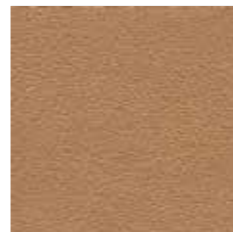
H 82



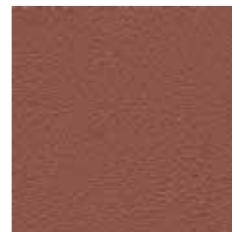
H 83



H 84



H 85



H 86



H 87



H 88



H 89



H 90



PROTOCOL



CATEGORIA H

FINTA PELLE IGNIFUGA
FIRE RETARDANT SIMIL LEATHER
SIMILICUIR NON-FEU
FEUERHEMMENDES KUNSTLEDER
POLIPIEL IGNÍFUGA

CATEGORIA H - CATEGORY H - CATEGORIE H - KATEGORIE H - CATEGORIA H

COMPOSIZIONE
COMPOSITION
COMPOSITION
STOFFZUSAMMENSETZUNG
COMPOSICIÓN

RESISTENZA ALL'ABRASIONE - Metodo Martindale
ABRASION RESISTANCE - Method Martindale
RESISTANCE A L'ABRASION - Méthod Martindale
ABRIEBBESTÄNDIGKEIT - Verfahren Martindale
RESISTENCIA A LA ABRASION - Método Martindale

RESISTENZA ALLA LUCE ARTIFICIALE
COLOUR FASTNESS TO ARTIFICIAL LIGHT
TENUE A LA LUMIERE
LICHTBESTÄNDIGKEIT
RESISTENCIA A LA LUZ ARTIFICIAL



LAVAGGIO
CLEANING
ENTRETIEN
REINIGEN
LAVADO

63% PU - 37% CO

150.000 cicli
150.000 cycles
150.000 cycles
150.000 Zyklen
150.000 ciclos

Soddisfatto Xenotest gradi 5/6 su gradi 8 max
Complied with Xenotest degrees 5/6 on degrees 8 max
Réponse favorable au Xenotest grés 5/6, grés 8 max
Xenotest bestanden 5/6 Grade auf 8 Grade max
Cumple con el Xenotest grados 5/6, grados 8 max

I UNI 9175/87 e 9175 FA-1/94 Classe 1
GB BS EN 1021 2/93
GB BS 5852 1/79 e 5852/90 Part. 4&5
IMO Res. A. 652(16)/89

Pulire con un panno umido d'acqua.
Non usare detersivi, solventi, candeggianti, abrasivi.
Clean with an umid cloth in water. Do not use detergents, solvents, bleached, abrasives.
Nettoyer avec un chiffon humide d'eau. Ne pas employer de détergents, solvants, blanchisseurs, abrasifs.
Reinigen mit durchfeuchtes Tuch und Neutralseife.
Neutralseife benutzen, um Schmutzflecken zu reinigen. Kein Wasch-, Lösungs-, Bleich- und Abreibungsmittel benutzen.
Limpiar con un trapo húmedo de agua. Utilizar jabón neutro para limpiar manchas.
No utilizar detergentes, solventes, decolorantes y agentes abrasivos.



2015.01

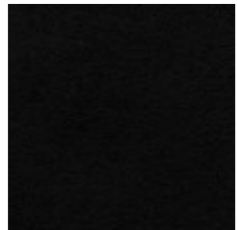


CATEGORIA H

VELLUTO IGNIFUGO - FIRE RETARDANT VELVET - VELOURS NON-FEU - FEUERHEMMENDER VELOURS - TERCIOPELO IGNÍFUGO

PROTOCOL 

H 41



H 40



H 44



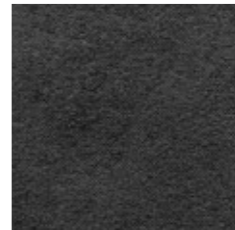
H 45



H 46



H 51



H 53



H 52



H 42



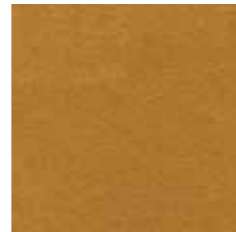
H 47



H 48



H 43



H 49



H 50



PROTOCOL



CATEGORIA H

VELLUTO IGNIFUGO
FIRE RETARDANT VELVET
VELOURS NON-FEU
FEUERHEMMENDER VELOURS
TERCIOPELO IGNÍFUGO

CATEGORIA H - CATEGORY H - CATEGORIE H - KATEGORIE H - CATEGORIA H

COMPOSIZIONE
COMPOSITION
COMPOSITION
STOFFZUSAMMENSETZUNG
COMPOSICIÓN

RESISTENZA ALL'ABRASIONE - Metodo Martindale
ABRASION RESISTANCE - Method Martindale
RESISTANCE A L'ABRASION - Méthod Martindale
ABRIEBBESTÄNDIGKEIT - Verfahren Martindale
RESISTENCIA A LA ABRASION - Método Martindale

RESISTENZA ALLA LUCE ARTIFICIALE
COLOUR FASTNESS TO ARTIFICIAL LIGHT
TENUE A LA LUMIERE
LICHTBESTÄNDIGKEIT
RESISTENCIA A LA LUZ ARTIFICIAL



LAVAGGIO
CLEANING
ENTRETIEN
REINIGEN
LAVADO

100% TREVIRA CS ®

100.000 cicli
100.000 cycles
100.000 cycles
100.000 Zyklen
100.000 ciclos

Soddisfatto Xenotest gradi 5±1 su gradi 6 max
Complied with Xenotest degrees 5±1 on degrees 6 max
Réponse favorable au Xenotest grés 5±1, grés 6 max
Xenotest bestanden 5±1 Grade auf 6 Grade max
Cumple con el Xenotest grados 5±1, grados 6 max

I
GB
F
D
US CA
INT.

UNI 9177/87 CLASSE 1
BS 5852/90
DIN 4102 CLASSE M1
DIN 4102/1 KLASSE B1Tech.
Bull. 117E
IMO res. A. 652 (16)



2015.01

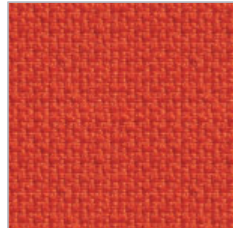


CATEGORIA H

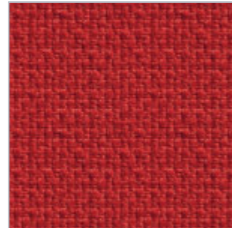
TESSUTO IGNIFUGO - FIRE RETARDANT FABRIC - TISSU NON-FEU - FEUERHEMMENDER STOFF - TELA IGNÍFUGA

PROTOCOL 

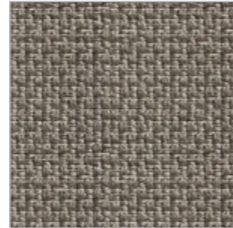
H 60



H 61



H 62



H 63



H 64



PROTOCOL



CATEGORIA H

TESSUTO IGNIFUGO
FIRE RETARDANT FABRIC
TISSU NON-FEU
FEUERHEMMENDER STOFF
TELA IGNÍFUGA

CATEGORIA H - CATEGORY H - CATEGORIE H - KATEGORIE H - CATEGORIA H

COMPOSIZIONE
COMPOSITION
COMPOSITION
STOFFZUSAMMENSETZUNG
COMPOSICIÓN

RESISTENZA ALL'ABRASIONE - Metodo Martindale
ABRASION RESISTANCE - Method Martindale
RESISTANCE A L'ABRASION - Méthod Martindale
ABRIEBBESTÄNDIGKEIT - Verfahren Martindale
RESISTENCIA A LA ABRASION - Método Martindale

RESISTENZA ALLA LUCE ARTIFICIALE
COLOUR FASTNESS TO ARTIFICIAL LIGHT
TENUE A LA LUMIERE
LICHTBESTÄNDIGKEIT
RESISTENCIA A LA LUZ ARTIFICIAL



LAVAGGIO
CLEANING
ENTRETIEN
REINIGEN
LAVADO

92% Lana vergine - 8% Poliammide
92% Pure new wool - 8% Polyamide
92% Laine vierge - 8% Polyamide
92% Rohwolle - 8% Polyamid
92% Lana virgen - 8% Poliamida

200.000 cicli
200.000 cycles
200.000 cycles
200.000 Zyklen
200.000 ciclos

Soddisfatto Xenotest gradi 5 su gradi 8 max
Complied with Xenotest degrees 5 on degrees 8 max
Réponse favorable au Xenotest grés 5, grés 8 max
Xenotest bestanden 5 Grade auf 8 Grade max
Cumple con el Xenotest grados 5, grados 8 max

GB
GB
US CA

EN 1021 1&2
BS 5852 0&1
Calif. Bull. 117 E

P



2015.05



CATEGORIA N

TESSUTO IGNIFUGO - FIRE RETARDANT FABRIC - TISSU NON-FEU - FEUERHEMMENDER STOFF - TELA IGNÍFUGA

PROTOCOL 

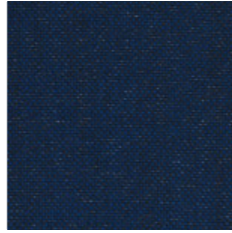
N 01



N 02



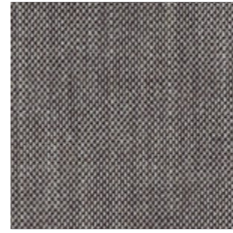
N 03



N 04



N 05



PROTOCOL



CATEGORIA N

TESSUTO IGNIFUGO
FIRE RETARDANT FABRIC
TISSU NON-FEU
FEUERHEMMENDER STOFF
TELA IGNÍFUGA

CATEGORIA N - CATEGORY N - CATEGORIE N - KATEGORIE N - CATEGORIA N

COMPOSIZIONE
COMPOSITION
COMPOSITION
STOFFZUSAMMENSETZUNG
COMPOSICIÓN

RESISTENZA ALL'ABRASIONE - Metodo Martindale
ABRASION RESISTANCE - Method Martindale
RESISTANCE A L'ABRASION - Méthod Martindale
ABRIEBBESTÄNDIGKEIT - Verfahren Martindale
RESISTENCIA A LA ABRASION - Método Martindale

RESISTENZA ALLA LUCE ARTIFICIALE
COLOUR FASTNESS TO ARTIFICIAL LIGHT
TENUE A LA LUMIERE
LICHTBESTÄNDIGKEIT
RESISTENCIA A LA LUZ ARTIFICIAL



LAVAGGIO
CLEANING
ENTRETIEN
REINIGEN
LAVADO

8% LI - 58% WV - 5% PA - 4% PL - 25% VI

50.000 cicli
50.000 cycles
50.000 cycles
50.000 Zyklen
50.000 ciclos

5-7 (ISO 1-8)
5-7 (ISO 1-8)
5-7 (ISO 1-8)
5-7 (ISO 1-8)

DIN 4102 B2
EN 1021-1/2
IMO A.652(16) trattato ignifugo
US Cal. Bull. 117-2013



2015.05



PROTOCOL 

Protocol
41 Tallon Road
Hutton, Brentwood, Essex
CM13 1TG United Kingdom

[t] 0208 591 6770

[e] sales@protocoluk.com

[w] www.protocoluk.com